

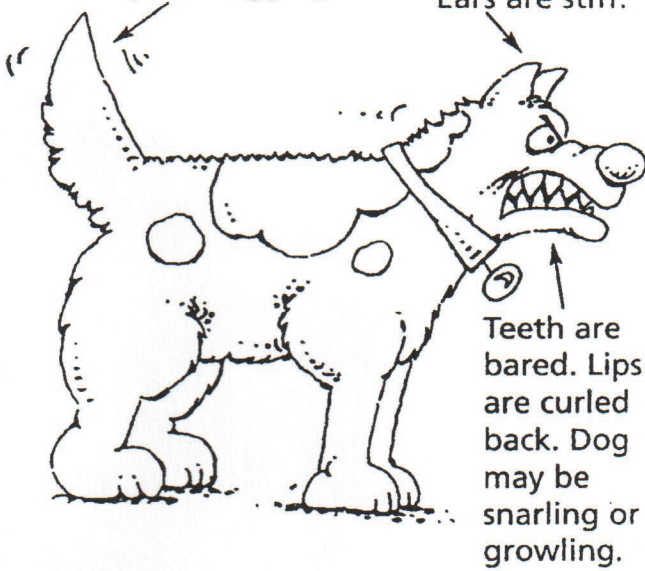
What Is This Dog Telling You?

Permission granted to classroom teachers to duplicate for classroom use. Reproduction by others for any purpose is prohibited without written permission from NAHEE. © NAHEE, P.O. Box 362, East Haddam, CT 06423. www.nahee.org

2

Tail is held high and stiff and may be wagging.

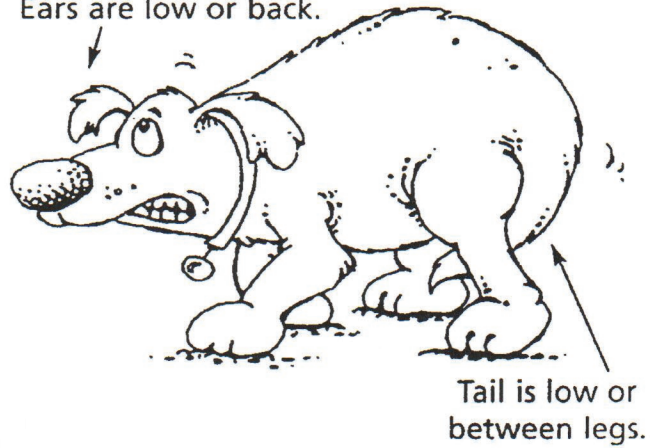
Ears are stiff.



Teeth are bared. Lips are curled back. Dog may be snarling or growling.

Body may be shaking or close to the ground.

Ears are low or back.

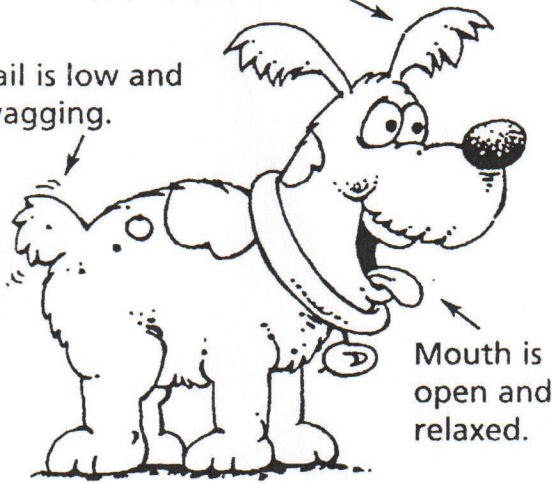


Tail is low or between legs.

3

Ears are forward and relaxed.

Tail is low and wagging.



Mouth is open and relaxed.

4

Tail is wagging.

Ears are forward and relaxed.



Head is resting on forepaws.